



BANYAN TREE

RESIDENCES

— RIVERSIDE BANGKOK —



DETAILS
MAKE MAGIC

NIRVANA DEVELOPMENT PLC.

Home is where the groundwork for all of life begins.
Meticulous attention to detail is given to creating homes that represent
a place of happiness and achievement that one can build on.

From the selection of materials and location, to the design and finish,
Nirvana Development Plc. ensures that every process is achieved with a mindset of
uncompromising quality.

AT THE HEART OF THE CHAO PHRAYA

A potent symbol of prosperity, abundance and serenity.
Rising from one of the most magnificent bends of the Chao Phraya River,
Banyan Tree Residences Riverside Bangkok is destined to honor
the majestic river and its rich history and culture.







BETWEEN THE OLD CITY

The Chao Phraya River has long shaped
a cherished way of life for past generations.

A peaceful atmosphere of old-fashioned charm,
historical buildings and cultural treasures
can be found and explored along the river.

Banyan Tree Residences Riverside Bangkok
brings a nurturing connection to its surrounding
communities.



A RARE RIVERSIDE LOCATION

Situated within intimate reach of the river
lifestyle, a rarity in the city, Banyan Tree Residences
Riverside Bangkok is set in the heart of
Chao Phraya River's historical Khlong San district,
where past and present gracefully intertwine.



AND THE NEW CITY

In the embrace of the old city and Bangkok's central business district, Banyan Tree Residences Riverside Bangkok enjoys the convenience of cosmopolitan commuting experiences to and from downtown Bangkok with easy expressway access and BTS/MRT transit stations nearby.





CONCIERGE SERVICES

A dedicated Banyan Tree concierge will provide a high level of service for residents.

- Services include but are not limited to:
- Arranging outings for golf tee times, personal trainers, car washing services
 - Information / bookings for events, restaurants, transport, and spa services
 - In-building facilities reservations
 - Postal services and parcel handling

ABOUT BANYAN TREE

Banyan Tree Group operates internationally to provide the ultimate tourism, accommodation and lifestyle experience. Banyan Tree's dedication, innovation and skills create an unrivaled living environment.

A rich heritage and reputation for outstanding quality and service make Banyan Tree one of the world's leading hospitality brands.

An established market leader in multi award winning resorts, spas and private residences.



Casa Lucardo, Tuscany, Italy

Banyan Tree Ringha, China



Chalet Lune, Four Valleys, Switzerland



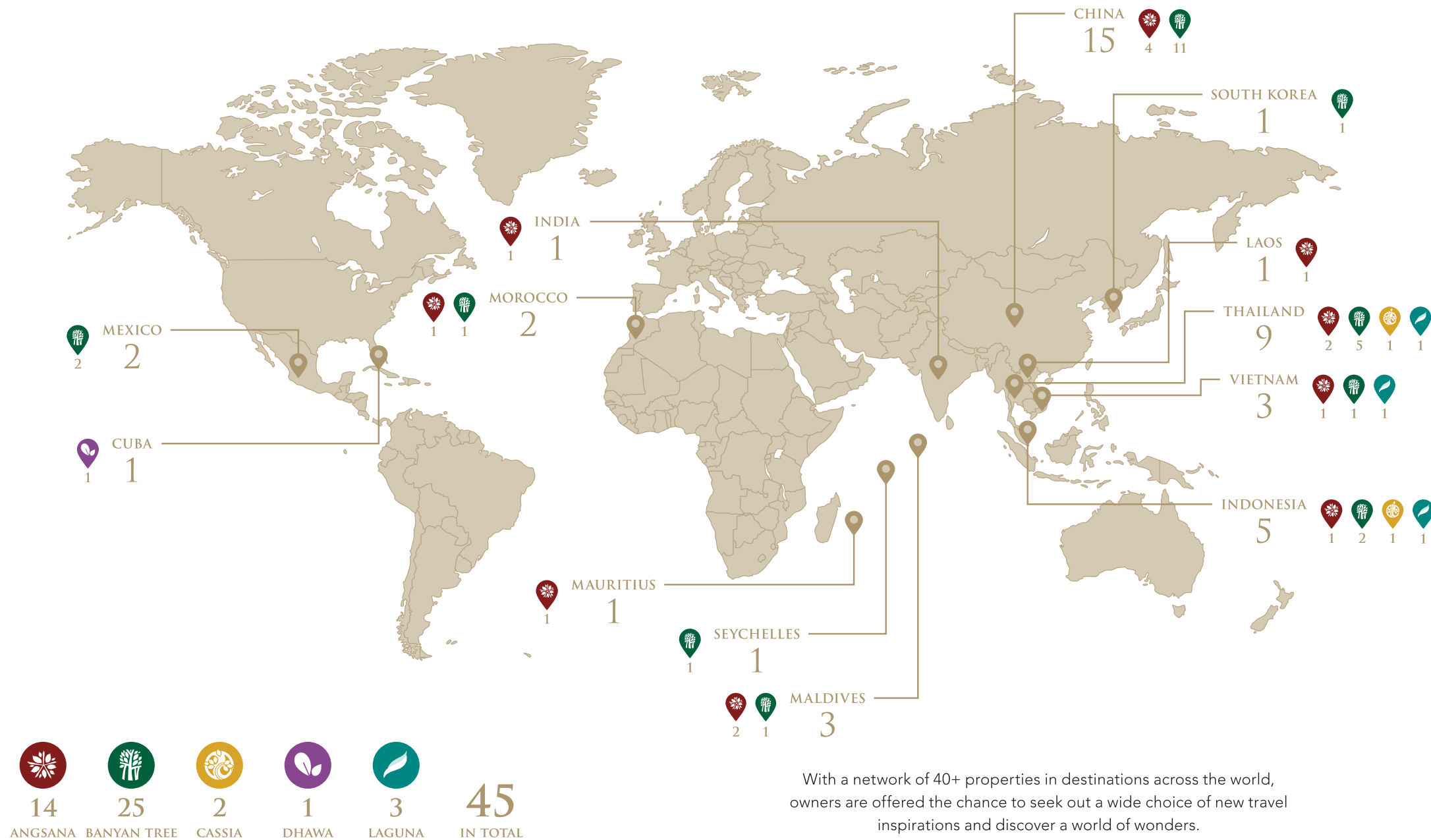
Pittormie Castle, St. Andrews, Scotland

BANYAN TREE PRIVATE COLLECTION*

Asia's first global destination club that allows members to have complimentary stays at Banyan Tree Private Collection properties and its affiliates.

*A select number of Banyan Tree Private Collection annual memberships will become available to customers upon transfer of select units.

NETWORK



SANCTUARY CLUB

Exclusive complimentary membership for owners.

Discounts and privileges from Banyan Tree Group worldwide at resorts, spas and retail galleries.

Exclusive invitations through the Xperiential guest program for new resort opening.



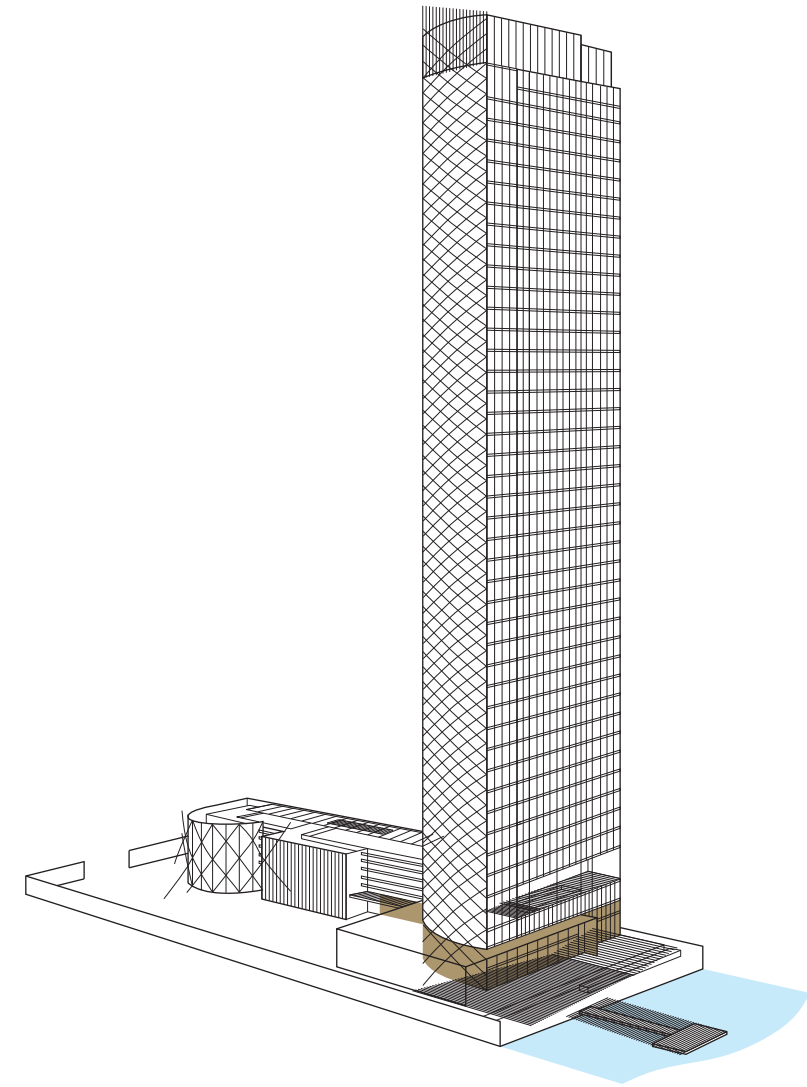
LET YOUR SOUL SHINE

Escape from the chaos of the city to a home where the luxury of inner peace and privacy is right at your doorstep.

At Banyan Tree Residences Riverside Bangkok, a multitude of thoughtful world class facilities await.

From private lifts to a luxurious fitness center, adult and kids swimming pools to a river facing jacuzzi, Banyan Tree Residences Riverside Bangkok offers holistically rejuvenating and relaxing experiences for the mind, body, and soul.

GROUND FLOOR



Outdoor Lounge



Main Entrance

- GROUND FLOOR
- Residential Lobby
 - Riverfront Lounge
 - Outdoor Lounge
 - Resident Shuttle Boat
 - Sunken Seating Area
 - Multipurpose Room



Private Resident Shuttle Boat Pier

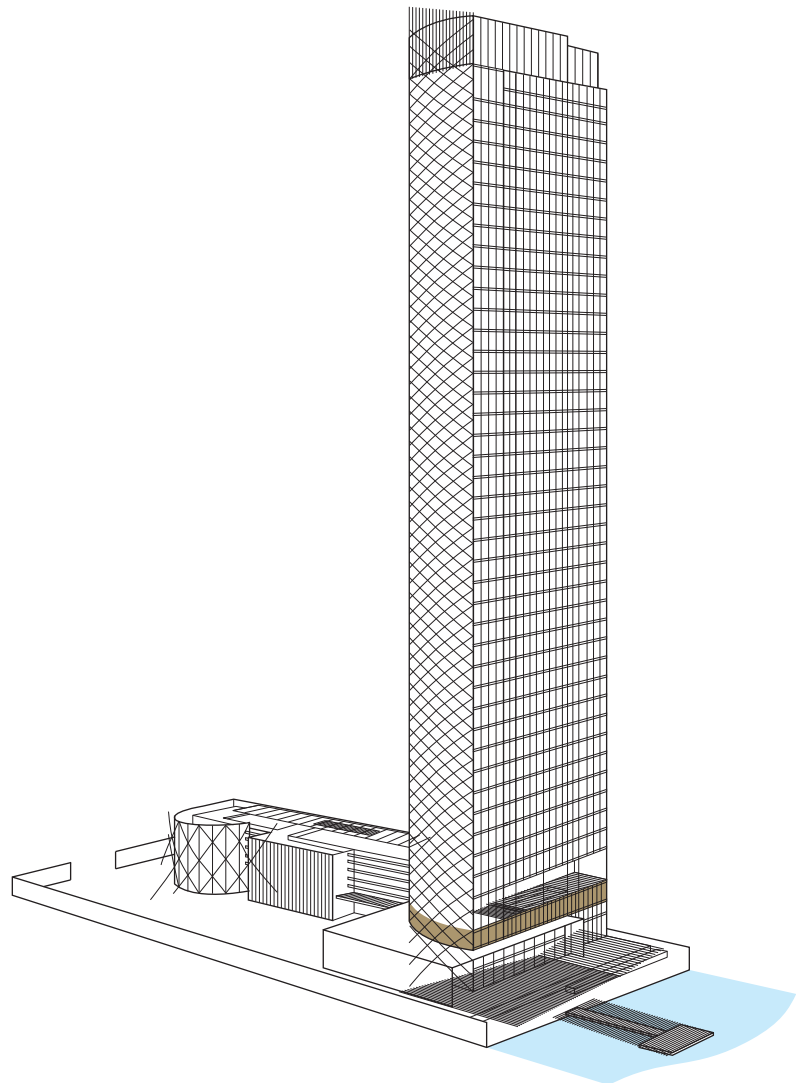


Private Dining Room



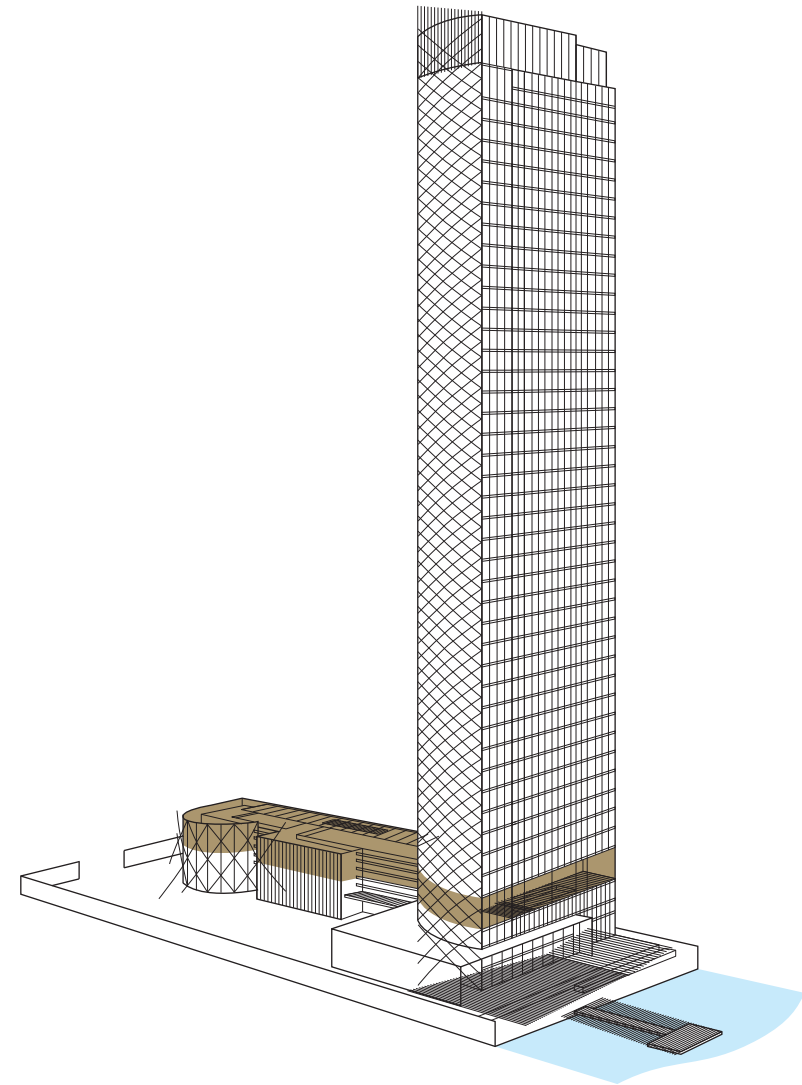
Board Room

SECOND FLOOR



- SECOND FLOOR
- Private Dining Room
 - Prefunction Room
 - River View Owners Lounge
 - Library Room
 - Meeting Room
 - Board Room

THIRD FLOOR



THIRD FLOOR

- Swimming Pool
- Kids Pool
- Cabanas
- Saunas
- Steam Rooms
- Kids Room
- Active Play Area
- Outdoor Lounge & BBQ Area
- River Facing Jacuzzi
- Fitness Center
- Banyan Tree Spa Room



Outdoor Lounge & BBQ Area



Fitness Center



Swimming Pool

“ THE SANCTUARY FOR YOUR SOUL ”

PRIVATE
LIFT LOBBIES



UNOBSTRUCTED
VIEW

133 UNITS
LOW - DENSITY
MAXIMUM 4 UNITS/FLOOR

6,000 SQ.M
COVERED FACILITIES

195%
CAR PARKING

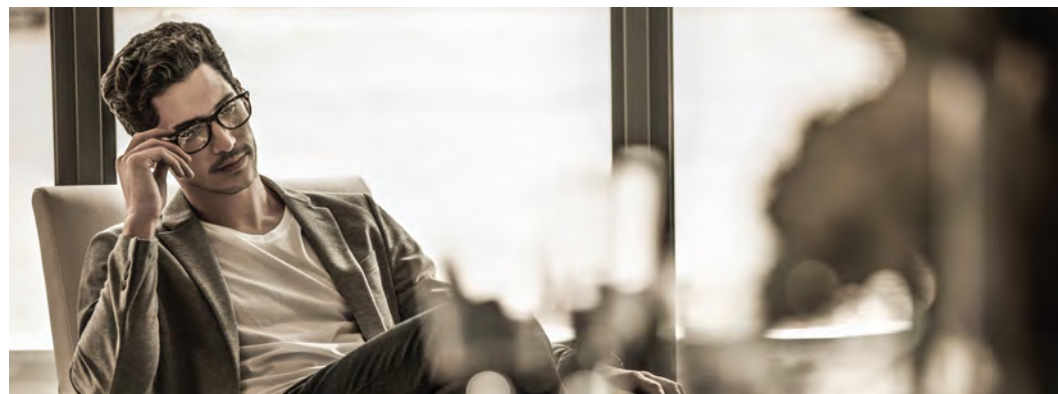




INTERIOR DESIGN

A modern interpretation of the Thai way of life along the river, the aesthetic heart of the interior design reflects the minimalist concept of keeping things simple using clean, crisp lines. Expansive windows and high ceilings offer wide open, unobstructed views of sunrises and historical landmarks.









FACTSHEET

PROJECT NAME : Banyan Tree Residences Riverside Bangkok

LOCATION : Chao Phraya Riverside, Charoennakhon Road

PROJECT TYPE : Ultimate Luxury Freehold Condominium
1 Building 45 Stories
133 Riverfront Units
(Maximum 4 Units Per Floor)

DEVELOPER : Nirvana Development Plc.

TOTAL PROJECT AREA : 5-1-10 Rai

UNIT TYPE AND AREA :
- 1 Bedroom 69.40 - 85.45 Sq.m
- 2 Bedroom 158.44 - 179.22 Sq.m
- 3 Bedroom 245.10 Sq.m
- 4 Bedroom (Duplex) 419.85 - 421.35 Sq.m
- Penthouse (Duplex) 838.70 Sq.m

PARKING : 260 Vehicles

ARCHITECT / INTERIOR /
LANDSCAPE DESIGNER :
SCDA Singapore

LOCAL ARCHITECT :
CAPA Co. Ltd

PROJECT DESIGNER :
Soo K. Chan

CONTRACTOR :
Bouygues - Thai

AMENITIES

GROUND FLOOR

- Residential Lobby
- Riverfront Lounge
- Outdoor Lounge
- Resident Shuttle Boat
- Sunken Seating Area
- Multipurpose Room

SECOND FLOOR

- Private Dining Room
- Prefunction Room
- River View Owners Lounge
- Library Room
- Meeting Room
- Board Room

THIRD FLOOR

- Swimming Pool
- Kids Pool
- Cabanas
- Saunas
- Steam Rooms
- Kids Room
- Active Play Area
- Outdoor Lounge & BBQ Area
- River Facing Jacuzzi
- Fitness Center
- Banyan Tree Spa Room

SPECIAL FEATURES & SERVICES

- Banyan Tree Spa
- Banyan Tree
Concierge Service
- Private Lifts
- Personal/Sports
Equipment Storage

BANYAN TREE PRIVILEGES

- Banyan Tree
Sanctuary Club
- Banyan Tree
Private Collection*

*Subject to certain terms and conditions

GROUND FLOOR PLAN



GROUND FLOOR
AMENITIES



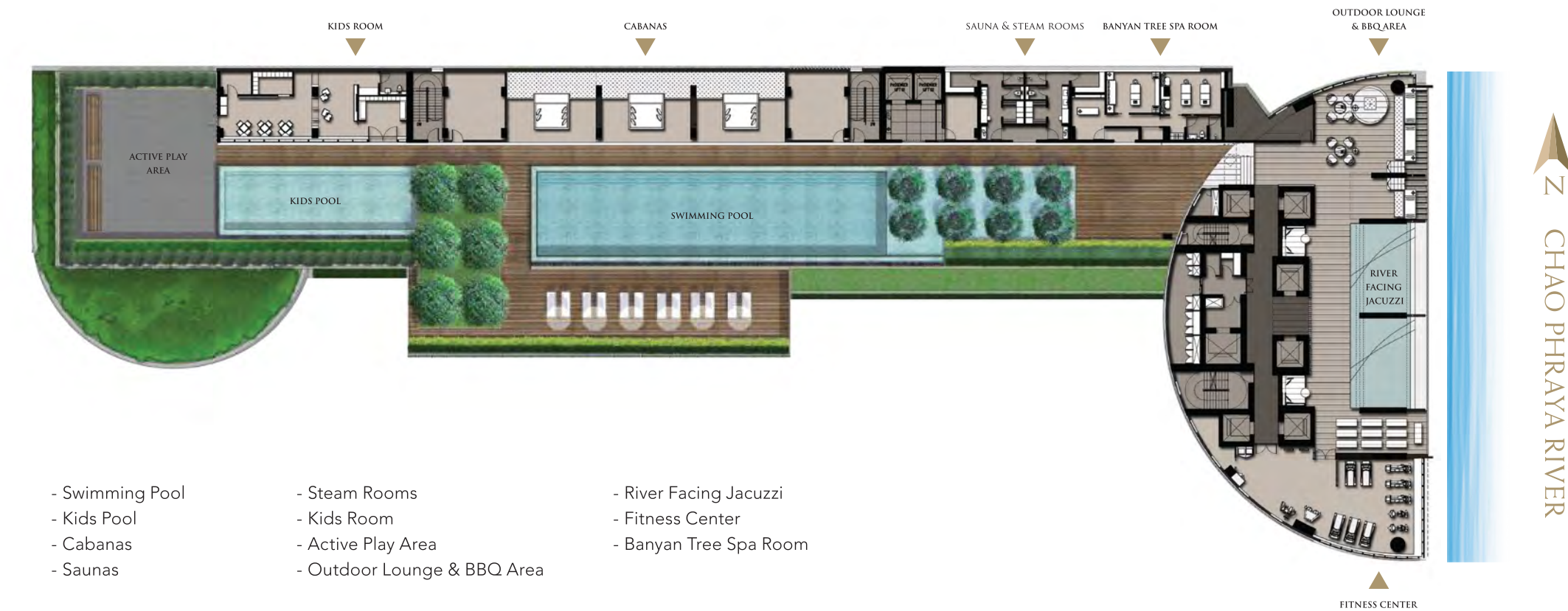
- Residential Lobby
- Riverfront Lounge
- Outdoor Lounge
- Resident Shuttle Boat
- Sunken Seating Area
- Multipurpose Room

SECOND FLOOR AMENITIES



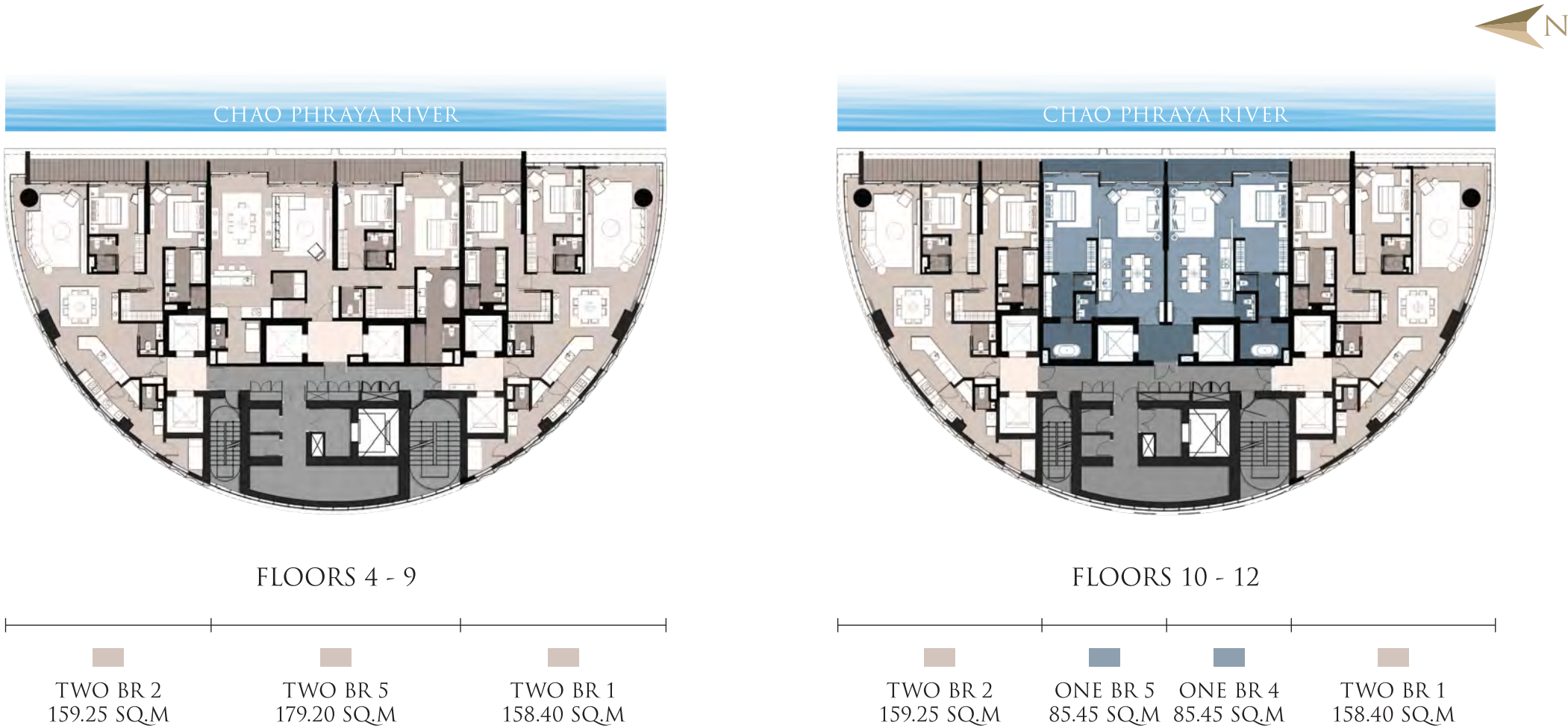
- Private Dining Room
- Prefunction Room
- River View Owners Lounge
- Library Room
- Meeting Room
- Board Room

THIRD FLOOR AMENITIES

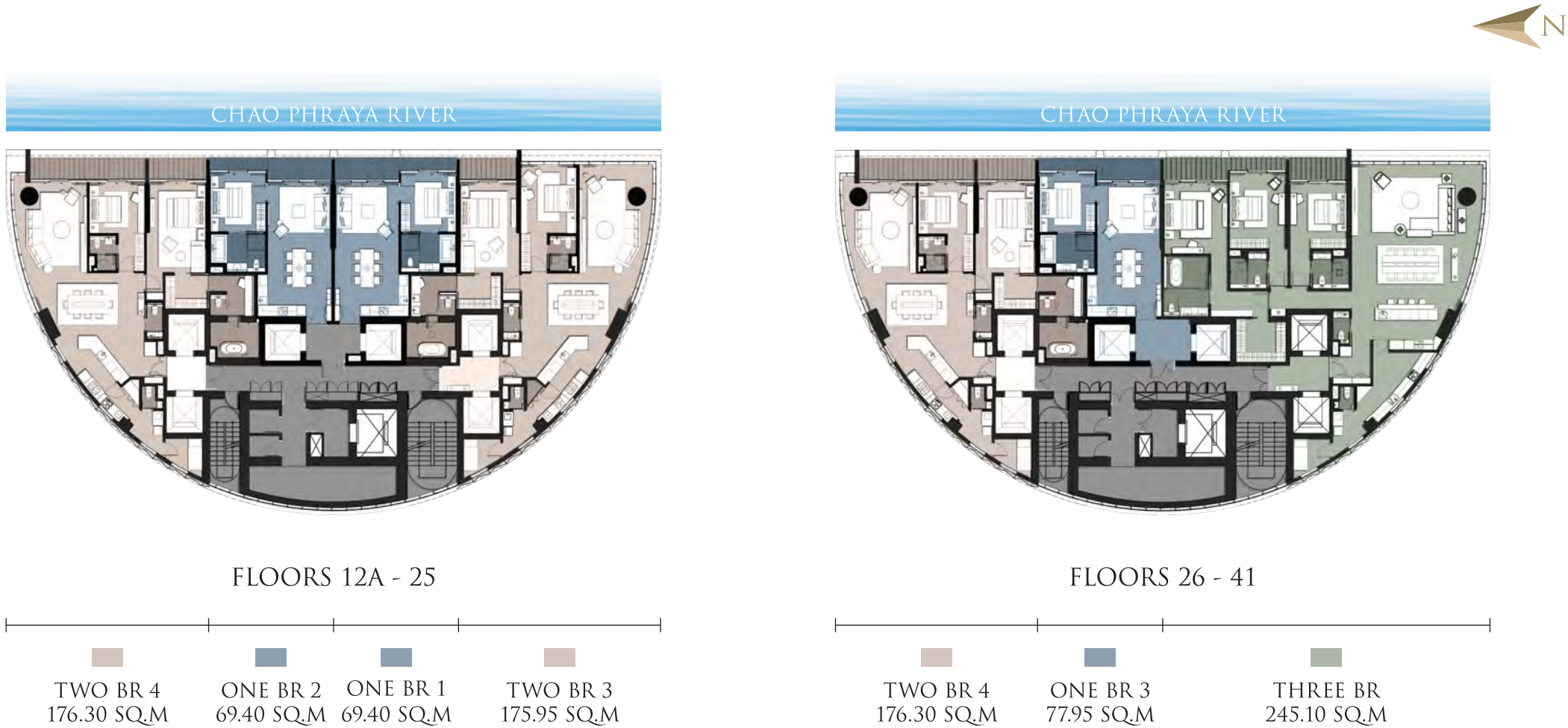


- Swimming Pool
- Kids Pool
- Cabanas
- Saunas
- Steam Rooms
- Kids Room
- Active Play Area
- Outdoor Lounge & BBQ Area
- River Facing Jacuzzi
- Fitness Center
- Banyan Tree Spa Room

FLOOR PLAN



FLOOR PLAN



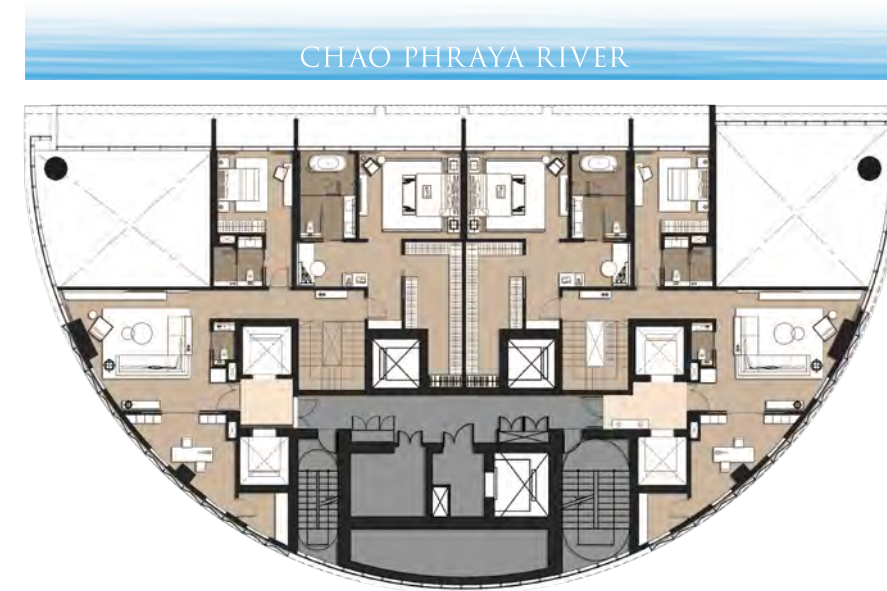
FLOOR PLAN



LOWER FLOOR
FLOOR 42

FOUR BR 2
419.85 SQ.M

FOUR BR 1
421.35 SQ.M

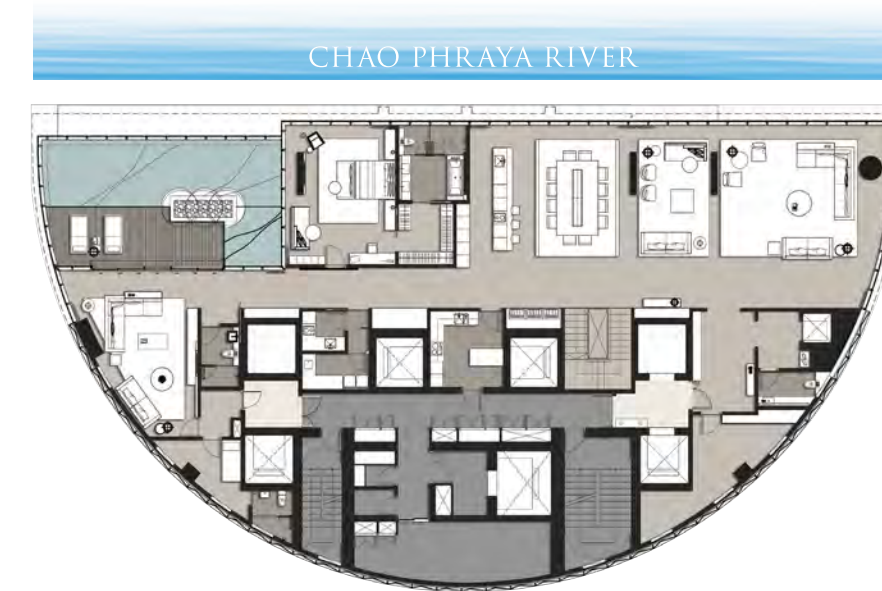


UPPER FLOOR
FLOOR 43

FOUR BR 2
419.85 SQ.M

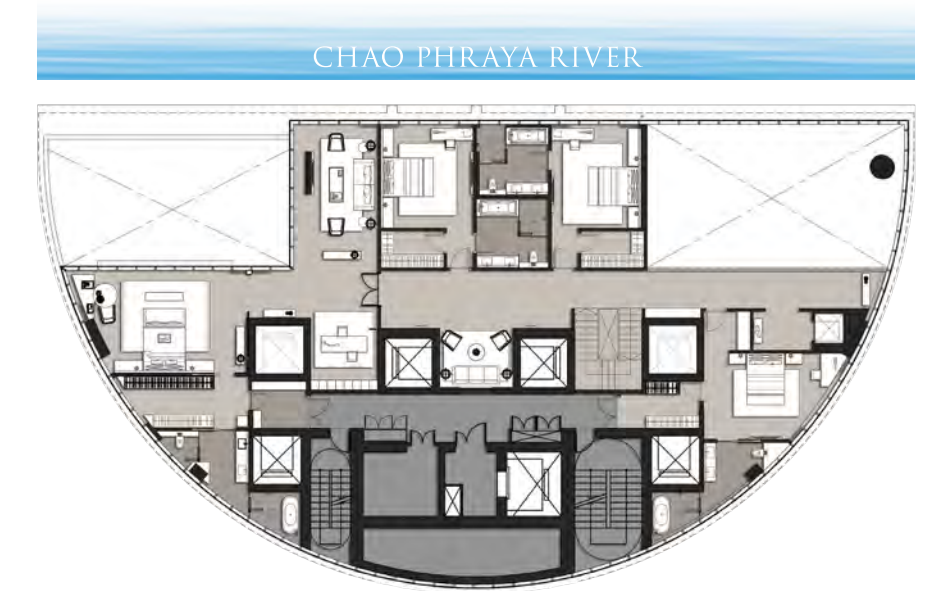
FOUR BR 1
421.35 SQ.M

FLOOR PLAN



LOWER FLOOR
FLOOR 44

PENTHOUSE DUPLEX
838.70 SQ.M

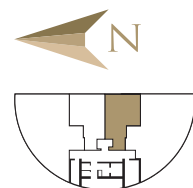


UPPER FLOOR
FLOOR 45

PENTHOUSE DUPLEX
838.70 SQ.M

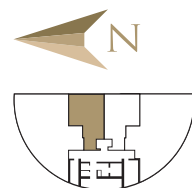
ONE BEDROOM 1

(70.00 SQ.M.)



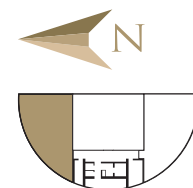
ONE BEDROOM 3

(78.56 SQ.M)



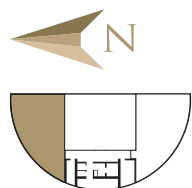
TWO BEDROOM 2

(160.61. SQ.M)



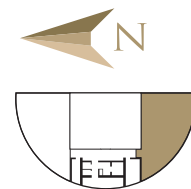
TWO BEDROOM 2

(160.45. SQ.M)



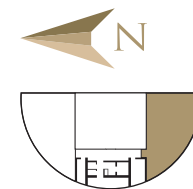
TWO BEDROOM 1

(160.85 SQ.M)



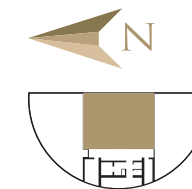
TWO BEDROOM 3

(178.64 SQ.M)



TWO BEDROOM 5

(181.23 SQ.M)





” THE SANCTUARY
FOR YOUR SOUL “



BANYAN TREE

RESIDENCES

— RIVERSIDE BANGKOK —